

MW Series

MW SERIES



Introduction

HITECH INDIA MW series power connectors are Qualified to MIL-DTL-55181 and listed in QPL.

MW series power connectors are with center lock screw, waterproof & polarized. These Connectors are used for interconnection of Audio power & control equipments especially the US Army Communication Systems.

MW connectors are designed to withstand high shock & vibrations ensured with unique center locking screw mechanism.

	Page
Introduction -----	1
Specification -----	2
Receptacle Assembly & Plug Assembly -----	3
Receptacle Connector & Plug Connector -----	4 - 6
List Of Qualified Part Numbers -----	7

Specification

Materials & Finish

Part	Material	Finishes
Plug Shell	Aluminum Alloy	Cadmium Plate with Olive drab chromate finish
Receptacle Shell	Brass	Cadmium Plate with Olive drab chromate finish
Nose Piece	Alloy Steel	Cadmium Plate with Olive drab chromate finish
Draw Screws	Stainless Steel	Passivation
Pin Contact	Brass	1.27 Micron Gold over Nickel
Socket Contact	Copper Alloy with BeCu Spring Element	1.27 Micron Gold over Nickel
Insulator	Glass-filled dially phthalate, type GDF-30F or SDG-F	

Mechanical

Contact Retention	10 lbs
Durability	500 Cycle
Insert Strength	400 lbs

Electrical

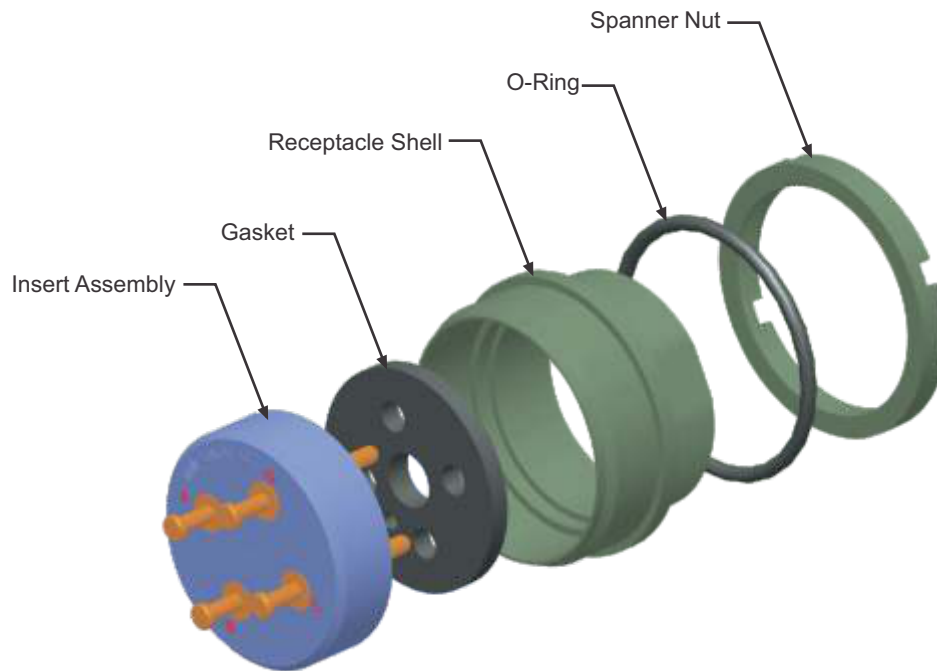
Operating Current 4 Contacts (12 AWG)	35 Amp
Operating Current 9 & 18 Contacts (20 AWG)	7.5 Amp
Contact Resistance 4 Contacts (12 AWG)	<0.57 milli Ohms (20 m V drop at 35 A)
Contact Resistance 9 & 18 Contacts (20 AWG)	<3.33 milli Ohms(20 m V drop at 7.5 A)
Insulation Resistance	1000 M Ohms min at 500 Vdc
Dielectric with Standing Voltage- 4 Contacts (12 AWG)	2000 V RMS
Dielectric with Standing Voltage- 18 Contacts (20 AWG)	1500 V RMS

Environmental

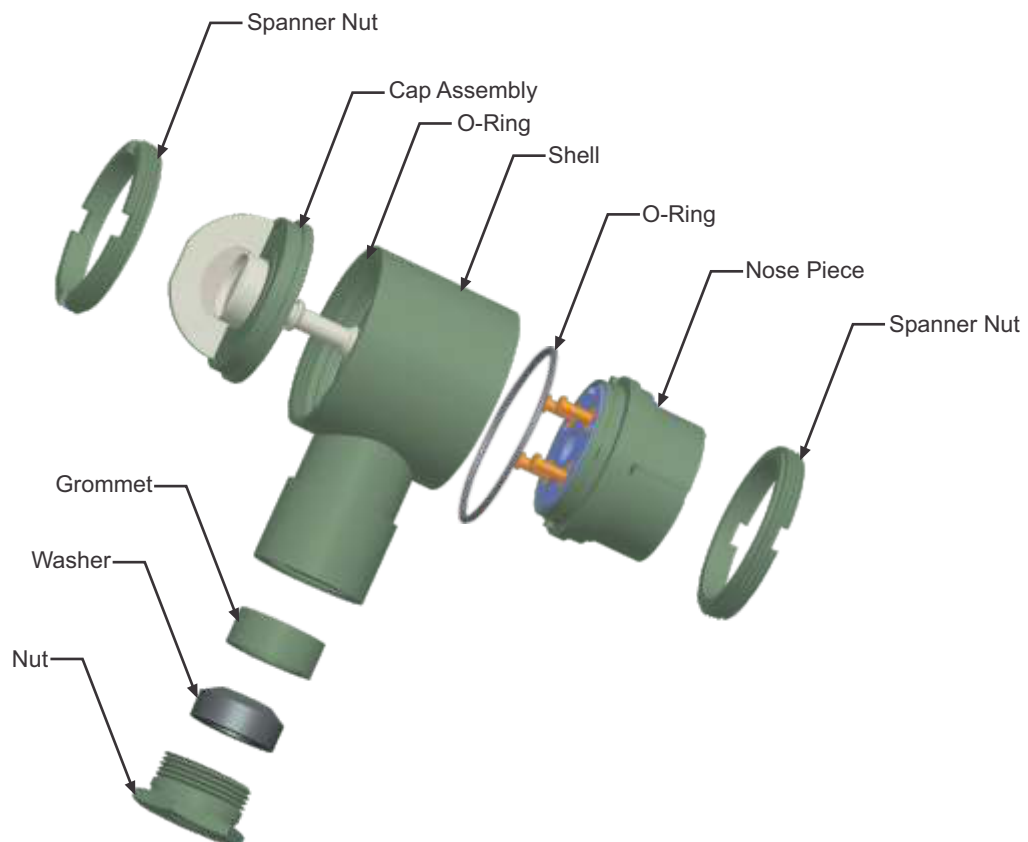
Operating Temperature	-55 Deg C To + 85 Deg C
Air Pressure	2.5 PSI
Water Immersion	6 Feet, 48 Hours

Receptacle Assembly & Plug Assembly

Receptacle Assembly



Plug Assembly

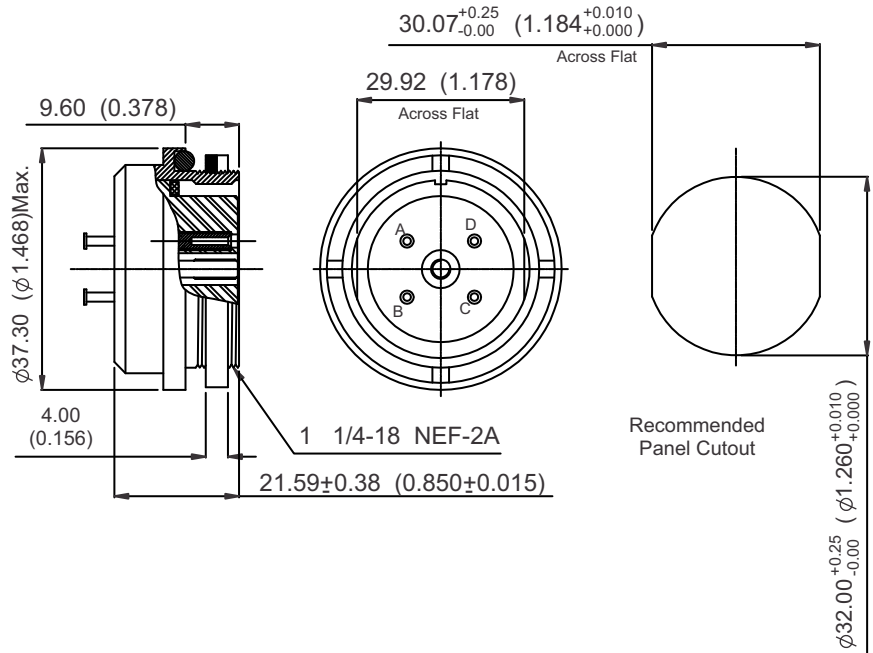


Receptacle Connector

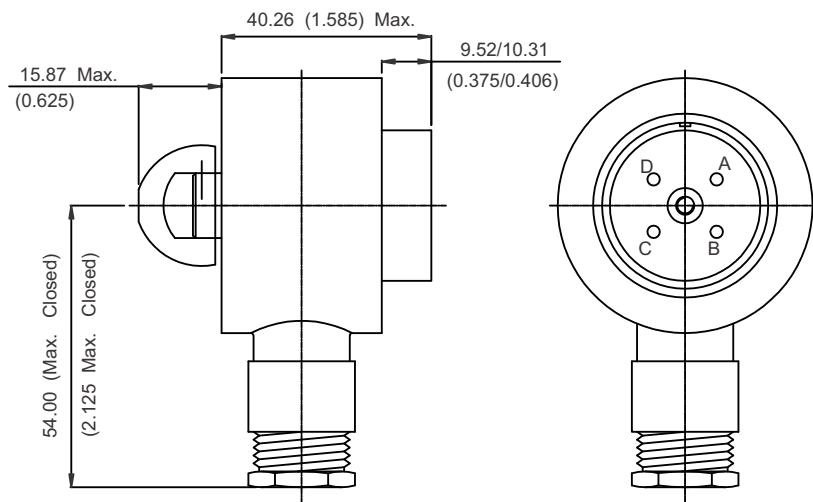
MW20M(M)AXX



MW20F(M)AXX



Plug Connector



MW10F(M)AXX



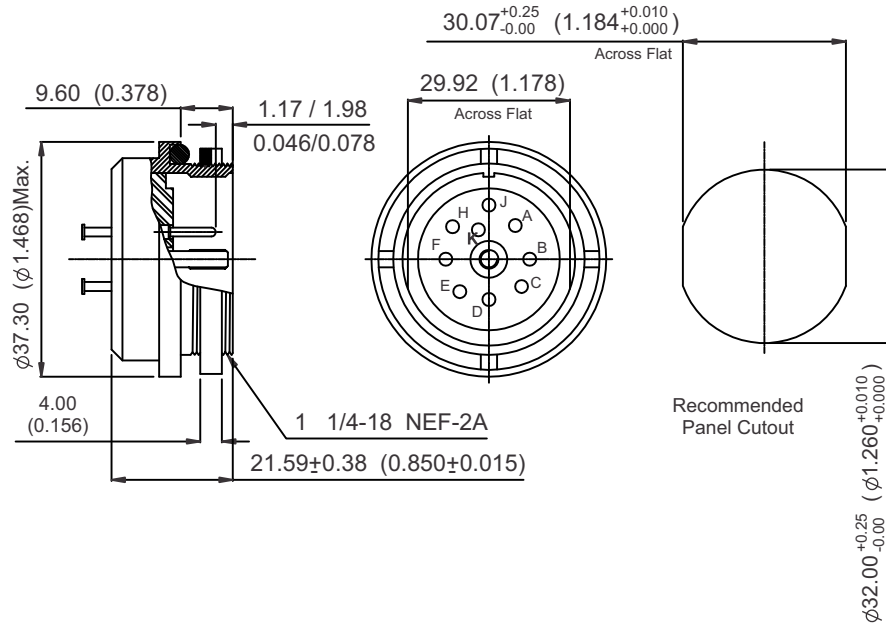
MW10M(M)AXX



* For Complete Part No. Replace "XX"
With Cable Clamp Code Shown In The Table-2 (page 8)

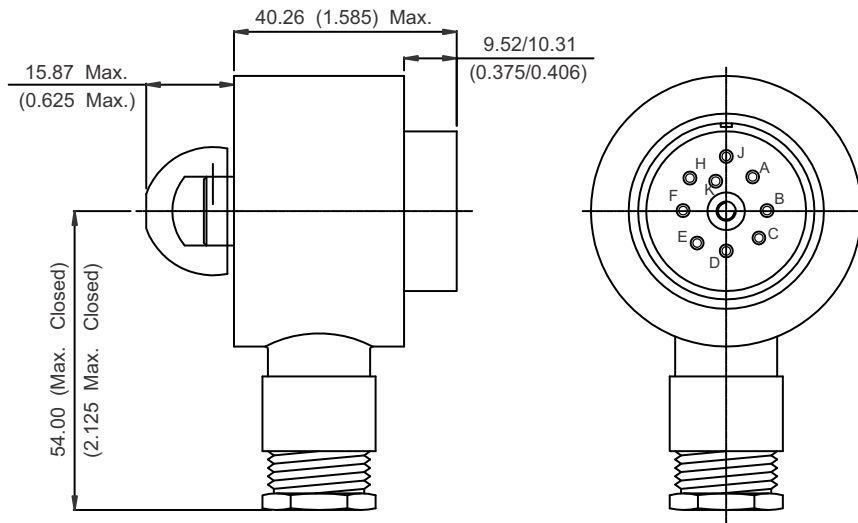
Receptacle Connector

MW20F(M)BXX



Plug Connector

MW10M(M)BXX

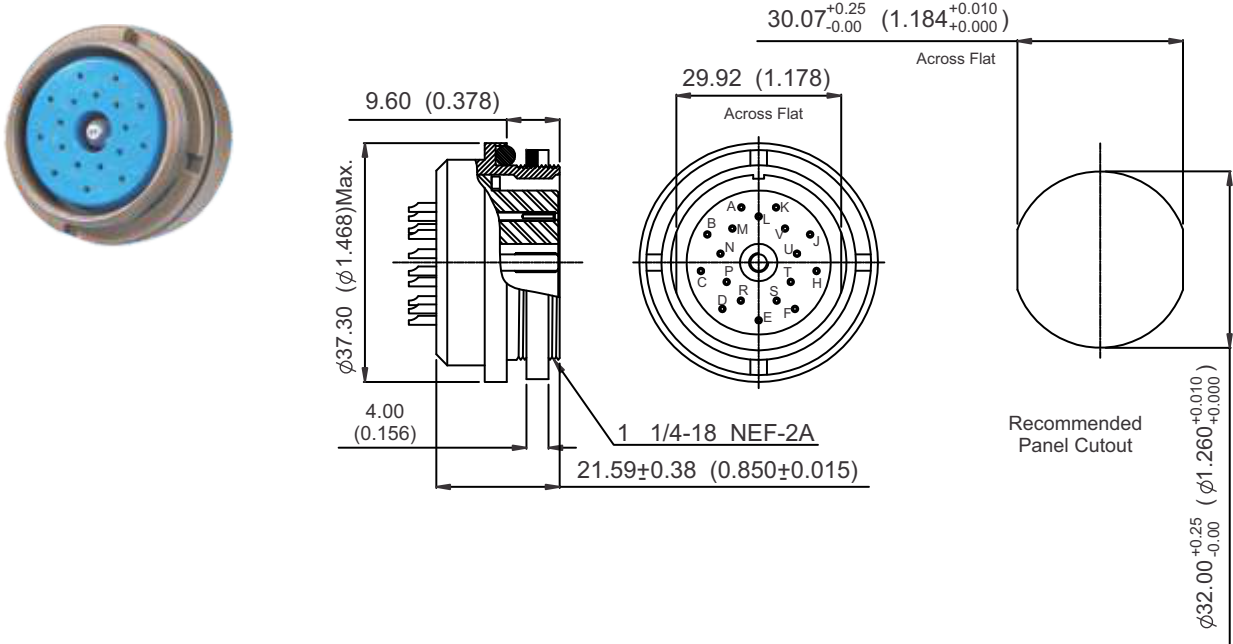


* For Complete Part No. Replace "XX"
With Cable Clamp Code Shown In The Table-2 (page 8)

* Above connectors are not tooled up, contact factory

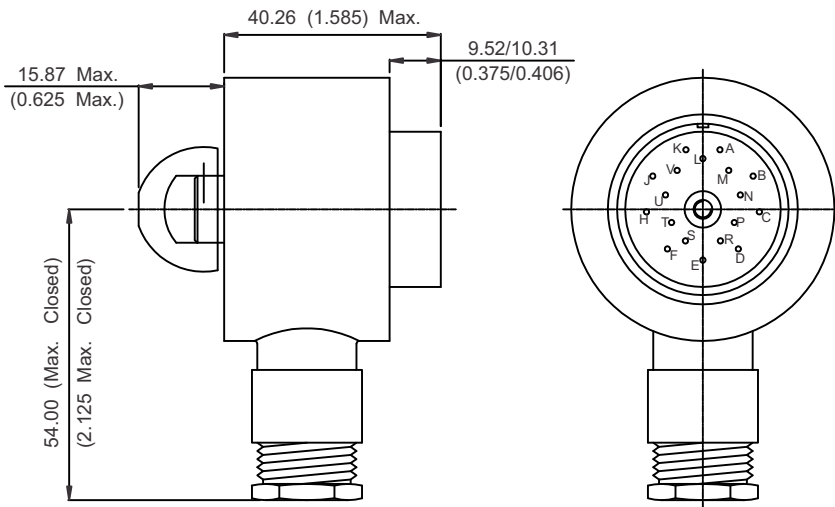
Receptacle Connector

MW20F(M)DXX



Plug Connector

MW10M(M)DXX*



* For Complete Part No. Replace "XX"
With Cable Clamp Code Shown In The Table-1 (page 8)

Notice : All information, including illustrations given herein is believed to be accurate at the time of printing. In lieu of design advances, HITECH INDIA reserves the right to change specifications without notice. This publication MW Series Connectors ACMW04 0712 supercedes all existing HITECH INDIA literature on MW Series Connectors.

List Of Qualified Part Numbers

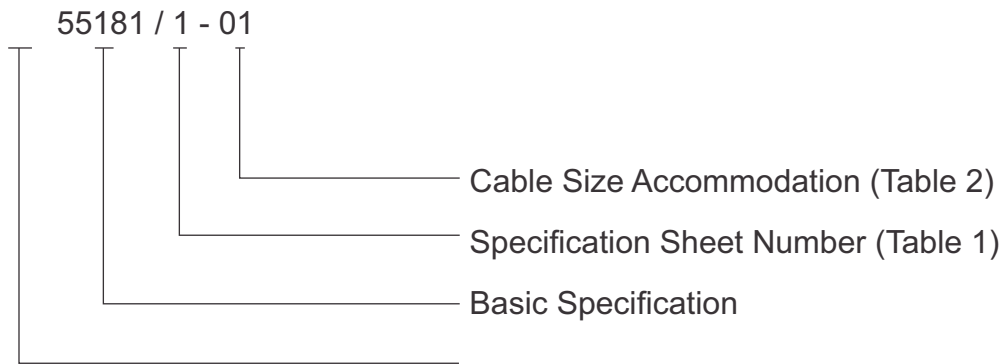


Table 1

MIL Designation
M55181/1-01
M55181/1-02
M55181/1-03
M55181/1-04
M55181/1-05
M55181/2-01
M55181/3-01
M55181/3-02
M55181/3-03
M55181/3-04
M55181/3-05
M55181/4-01
M55181/7-01
M55181/7-02
M55181/7-03
M55181/7-04
M55181/7-05
M55181/8-01

Table 2

Cable Clamp Code for M55181 Part No.	Cable Clamp Code For MW Part No.	Cable Diameter-Inch	Cable Diameter-mm
1	11	0.292 to 0.343	7.42 to 8.71
2	13	0.323 to 0.406	8.20 to 10.31
5	15	0.386 to 0.468	9.80 to 11.88
3	17	0.448 to 0.531	11.38 to 14.49
4	19	0.511 to 0.593	12.98 to 15.06

* Cable size accommodation specification is not applicable for receptacles